

Warren County Sheriff's Office

1400 State Route 9
Lake George, New York 12845
(518) 743-2500

Nathan H. York
Warren County Sheriff

Major C. Shawn Lamouree
Administration
Field Operations



Undersheriff Robert E. Swan
Division Commander
Law Enforcement Division

Captain Michael T. Gates
Division Commander
Correction Division

January 5th, 2012

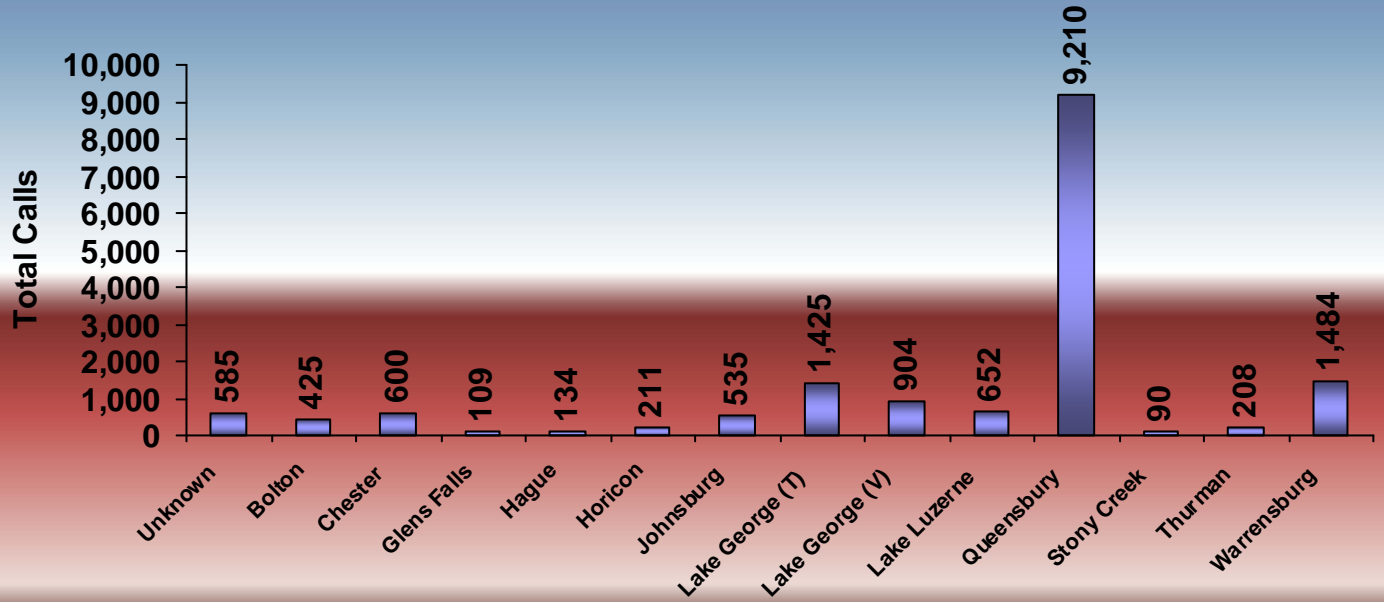
By the Numbers January 1st, 2011 – December 31st, 2011

Phone Calls Handled	96,002
Calls Dispatched by Services	
Law Enforcement	21,342
Fire	12,053
Emergency Medical Services.....	9,573
Total	42,968

911 Calls for Law Enforcement Services transferred to GF Police January 1st, 2011 thru December 31st, 2011

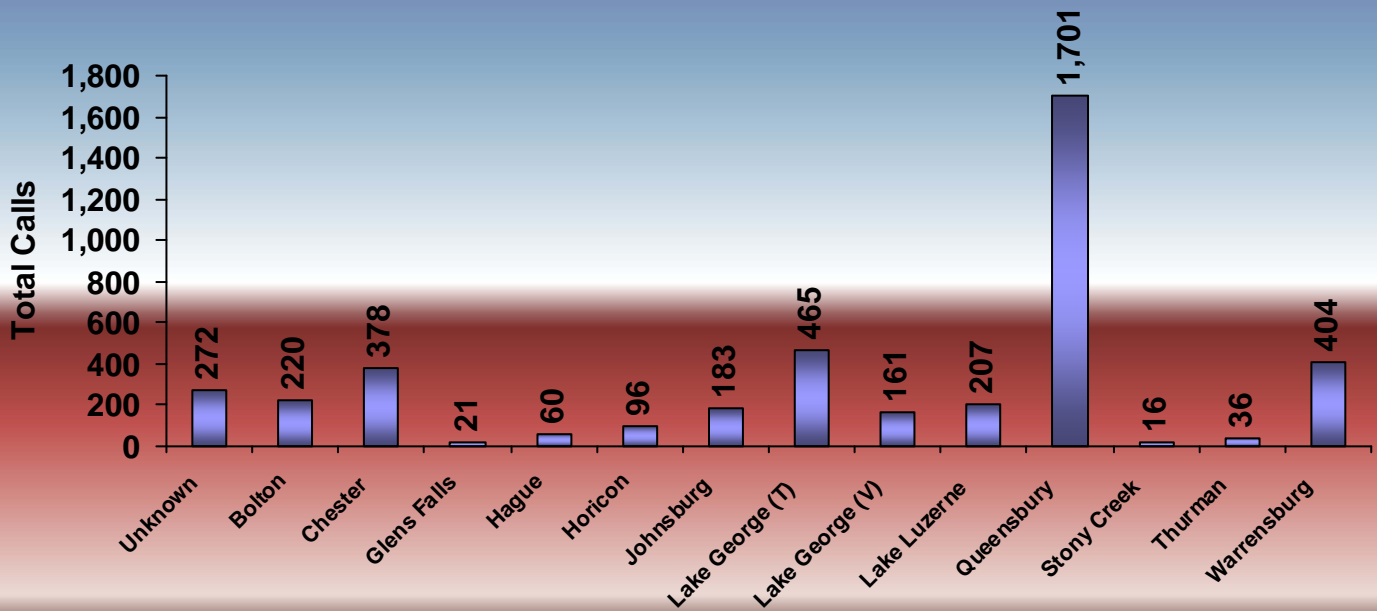
1 st Quarter	578
2 nd Quarter	687
3 rd Quarter	746
4 th Quarter	604
Total	2,615

**2011 Law Enforcement Call by Venue
Warren County Sheriff's Office**

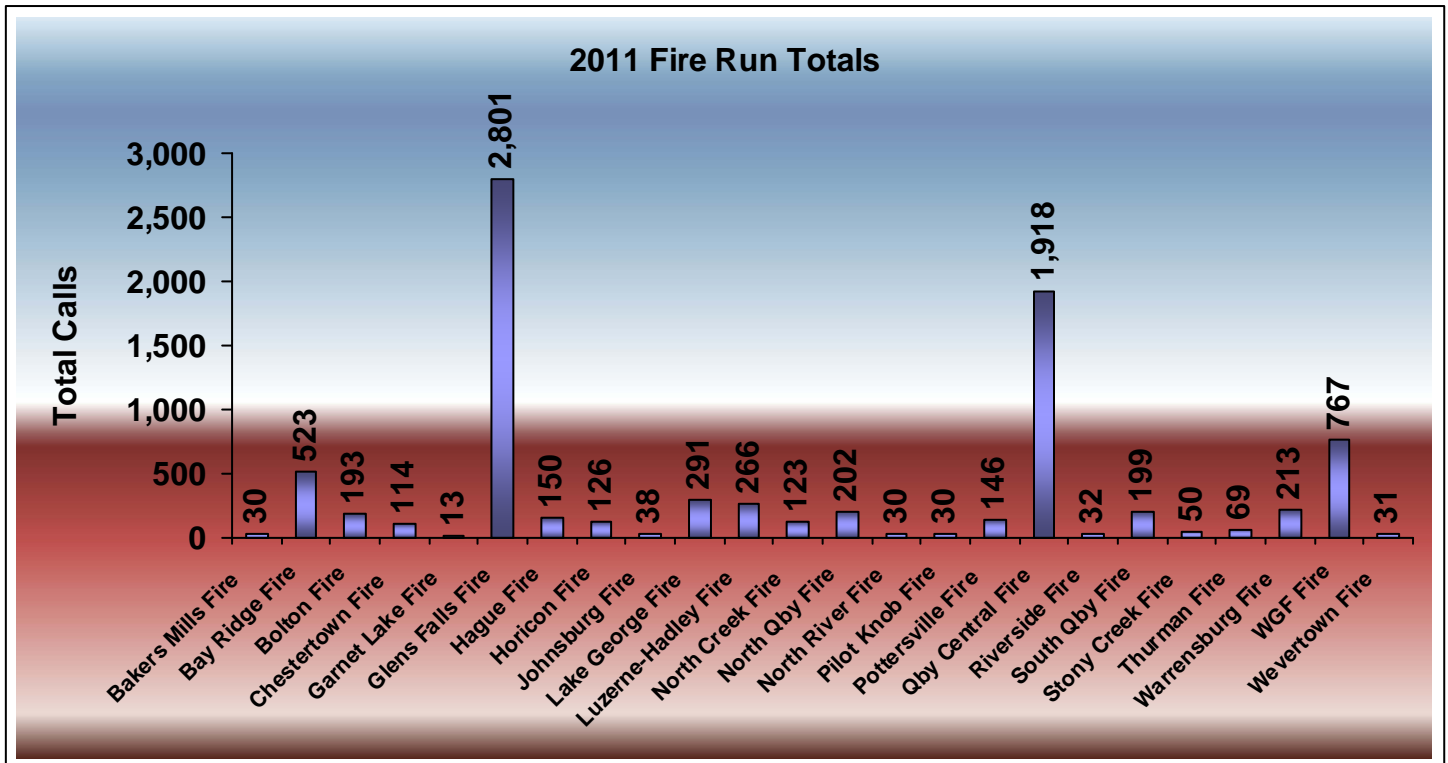


<u>Venue</u>	<u>Incidents</u>	<u>Percentage (%)</u>
Unknown	585	3.53%
Bolton	425	2.56%
Chester	600	3.62%
Glens Falls	109	0.65%
Hague	134	0.80%
Horicon	211	1.27%
Johnsburg	535	3.22%
Lake George (T)	1,425	8.59%
Lake George (V)	904	5.45%
Lake Luzerne	652	3.93%
Queensbury	9,210	55.57%
Stony Creek	90	0.54%
Thurman	208	1.25%
Warrensburg	1,484	8.95%
Total	16,572	100%

**2011 Law Enforcement Call by Venue
New York State Police**

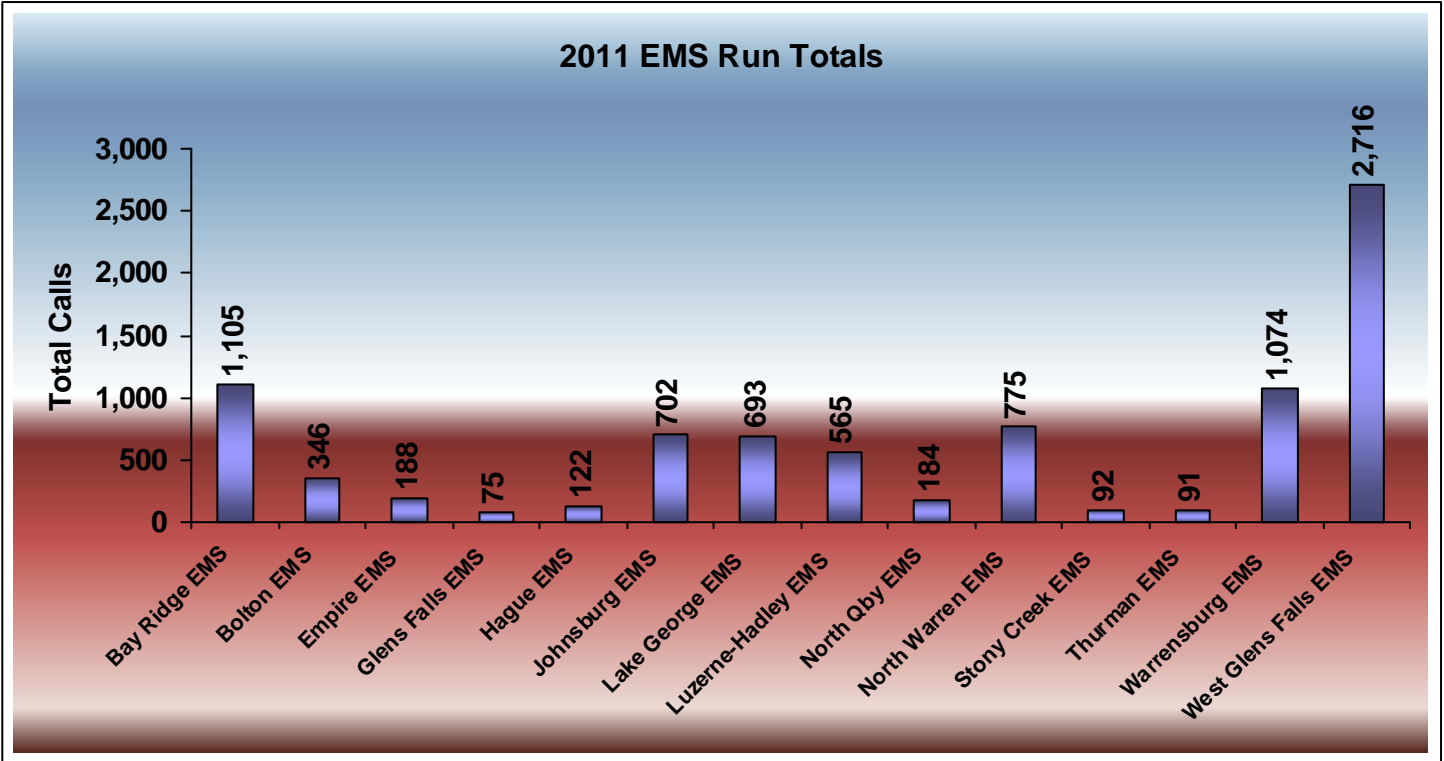


<u>Venue</u>	<u>Incidents</u>	<u>Percentage (%)</u>
Unknown	272	6.44%
Bolton	220	5.21%
Chester	378	8.95%
Glens Falls	21	0.49%
Hague	60	1.42%
Horicon	96	2.27%
Johnsburg	183	4.33%
Lake George (T)	465	11.01%
Lake George (V)	161	3.81%
Lake Luzerne	207	4.90%
Queensbury	1,701	40.30%
Stony Creek	16	0.37%
Thurman	36	0.85%
Warrensburg	404	9.57%
Total	4,220	100%



<u>Agency</u>	<u>Incidents</u>	<u>Percentage (%)</u>
Bakers Mills Fire	30	0.35%
Bay Ridge Fire	523	6.25%
Bolton Fire	193	2.30%
Chestertown Fire	114	1.36%
Garnet Lake Fire	13	0.15%
Glens Falls Fire	2,801	33.52%
Hague Fire	150	1.79%
Horicon Fire	126	1.50%
Johnsburg Fire	38	0.45%
Lake George Fire	291	3.48%
Luzerne-Hadley Fire	266	3.18%
North Creek Fire	123	1.47%
North Qby Fire	202	2.41%
North River Fire	30	0.35%
Pilot Knob Fire	30	0.35%
Pottersville Fire	146	1.74%
Queensbury Central Fire	1,918	22.95%
Riverside Fire	32	0.38%
South Queensbury Fire	199	2.38%
Stony Creek Fire	50	0.59%
Thurman Fire	69	0.82%
Warrensburg Fire	213	2.54%
West Glens Falls Fire	767	9.18%
Wevertown	31	0.37%
Total	8,355	100%

2011 EMS Run Totals



<u>Agency</u>	<u>Incidents</u>	<u>Percentage (%)</u>
Bay Ridge EMS	1,105	12.66%
Bolton EMS	346	3.96%
Empire EMS	188	2.15%
Glens Falls EMS	75	0.85%
Hague EMS	122	1.39%
Johnsburg EMS	702	8.04%
Lake George EMS	693	7.93%
Luzerne-Hadley EMS	565	6.47%
North Qby EMS	184	2.10%
North Warren EMS	775	8.87%
Stony Creek EMS	92	1.05%
Thurman EMS	91	1.04%
Warrensburg EMS	1,074	12.30%
West Glens Falls EMS	2,716	31.11%
Total	8,728	100%

Respectfully Submitted,

Lawrence E. Jeffords
 Communications Supervisor